

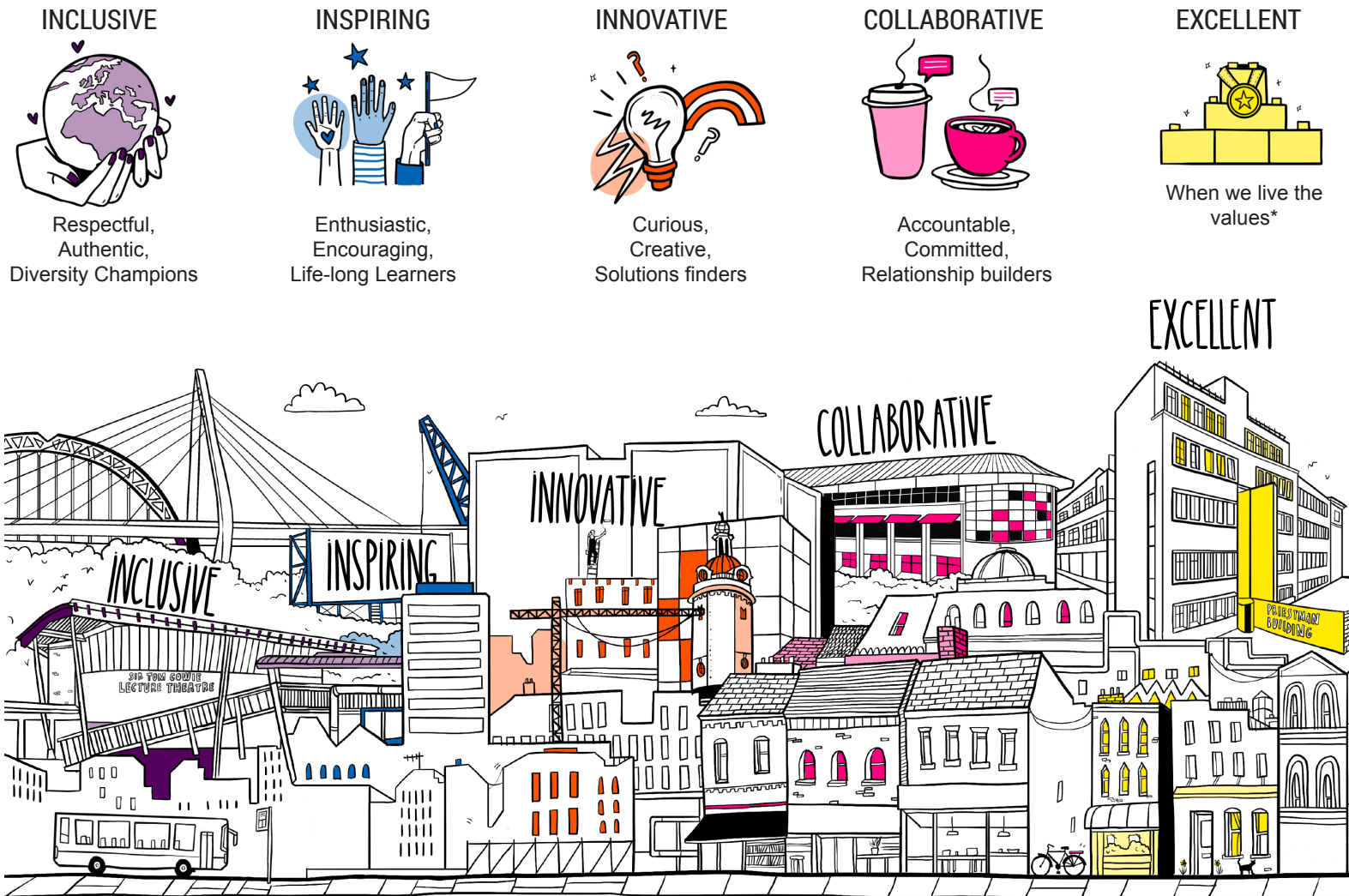
CULTURE FRAMEWORK

THE UNIVERSITY OF SUNDERLAND WAY

This **CULTURE FRAMEWORK** presents the way we do things at the University of Sunderland. Our values are shared across the institution and we undertake actions to help them come to life.

We asked colleagues what behaviours make our University a unique place to work, and these are our combined responses. It is a living document of our culture, illustrated by one of our very own graduates.

The framework supports how we apply ourselves at work. It helps with our approach to making decisions, and working with each other. It is woven into all our people policies and procedures, supporting how colleagues are managed, recognised and developed. It is a reference point from which we can deliver our ambitious plans, **THE UNIVERSITY OF SUNDERLAND WAY**.



INCLUSIVE




Respectful,
Authentic,
Diversity Champions

INSPIRING



Enthusiastic,
Encouraging,
Life-long Learners

INNOVATIVE



Curious,
Creative,
Solutions finders

COLLABORATIVE



Accountable,
Committed,
Relationship builders

EXCELLENT



When we live the values*

*We strive for excellence in all that we do in teaching, learning, research and knowledge exchange, as well as in the services we provide to students and to each other. To enable us to be excellent, we seek to act in inspiring, inclusive, innovative and collaborative ways.